

2024

Product Catalog

HOLLAND
— BAR STOOL —

Enduring quality, design and passion.



Holland Bar Stool is no ordinary bar stool company. Founded on the principles of excellent quality, craftsmanship, and service, our distinct design, production, and customization abilities make us unique. Located in Holland, Michigan, our manufacturing has expanded into a variety of fields. What started out as a few styles of wooden stools decades ago has become Holland Bar Stool's current line of seating, tables, home decor, recreation, and game room products that combine strength and beauty to complement any entertainment space.

Our commitment to product development and capability expansion allows us to meet ever-changing demands and industry trends. Our proficient customization process allows consumers to create their own designs. Solid wood with catalyzed lacquer finishes, powder coated metal to resist rust and abrasion, an impressive upholstery selection, a variety of wood finishes, and custom options for height, wood finish, and upholstery provide endless possibilities. Our advanced digital printing, laser engraving, and sublimation processes produce clear images and vibrant designs.

We stand behind every product with uncompromising quality, durability, and attention to detail. Our products have been independently tested to meet or exceed BIFMA/ANSI standards, and our highly knowledgeable and tenured team share a passion for creating value for customers. With a minimum order quantity of 1 and standard lead time of 7-10 business days, you save valuable warehouse space and inventory investment. We are happy to drop ship directly to your clients.

We invite you to peruse our catalog and look forward to the possibilities.

Holland Bar Stool

INDEX

Steel Seating Series	4
Wood Seating Series	22
XL Seating Series - Big & Tall	32
Stack Seating Series	34
Table Series	36
Outdoor Series	42
Licensed Logo Game Room Series	52
Cover Series	86
Custom Series	94
Parts & Accessories	96
Appendices	
I Measuring Seating, Tables, and Space	100
II General Information	102
III Seating Frame, Table Base, and Outdoor Table Top Finishes	104
IV Officially Licensed Logos	108
V Tire Cover and Tire Shade Size Chart	114
VI Warranties	116
VII Return Policy	119



Steel Seating Series

Superior craftsmanship, comfort, and sophistication meet in our Steel Seating Series.

Commercial quality materials, construction, and finishes provide strength, durability, and a long-lasting, rich appearance. Our steel chairs and stools are created with 16-gauge, 1.25" steel tubing with solid MIG welded joints. 304 stainless steel is available for many styles, and our powder coated finishes resist rust, chips, and abrasions for enduring function and beauty.

Swivel stools feature our encased 52 stainless steel ball bearing swivels. Swivels are powder coated to resist rust and ensure a smooth rotation for a quality seating experience.

Customize your seat from an impressive upholstery selection for a cushion seat or select from a variety of wood finishes for a solid domestic hardwood oak or maple seat. Constructed in Holland, MI, cushion seats are high-density, US-made foam and commercial quality, marine grade vinyl. Dacron provides sustainable comfort and support, and a softer, rounder aesthetic.





Shown: Anodized Nickel, Canter Folkstone Grey



Shown: Bronze, Natural Maple



Shown: Black Wrinkle, Graph Anchor

#400 Jackie I

Stationary Chair Options (also see Appendix):

Frame: Black Wrinkle, Pewter, Bronze, Anodized Nickel, 304 Stainless Steel (18 only)
 Seat: Wood, Fabric, Vinyl, COM

Stationary Stool Options (also see Appendix):

Frame: Black Wrinkle, 304 Stainless Steel (30 only)
 Seat: Wood, Fabric, Vinyl, COM

SH	H	BRH	BRW	SD	SW	FRH
18	38.5	14.5	16.5	16	17	-
25	43.5	14.5	16.5	16	17	12
30	49.5	14.5	16.5	16	17	15

See Appendix for dimension abbreviation meanings.
 Measurements are in inches. Minor variations in size may occur.
 Custom heights also available.



Shown: Stainless Steel, Graph Tidal



Shown: Black Wrinkle, Canter Kiwi Green



Shown: Pewter, Graph Alpine

#410

Jackie 2

Options (also see Appendix):

Frame: Black Wrinkle, Pewter, Bronze, Anodized Nickel, 304 Stainless Steel
 Seat: Wood, Fabric, Vinyl, COM
 Swivel: S-360 (standard), Memory

SH	H	BRH	BRW	SD	SW	FRH
25	38.5	14.5	16.5	16	17	7
30	43.5	14.5	16.5	16	17	12
36	49.5	14.5	16.5	16	17	15

See Appendix for dimension abbreviation meanings.
 Measurements are in inches. Minor variations in size may occur.
 Custom heights also available.



Shown: Black Wrinkle, Canter Red



Shown: Black Wrinkle, Graph Coal



Shown: Black Wrinkle, Natural Oak

#415

Jackie 3

Options (also see Appendix):

Frame: Black Wrinkle
 Seat: Wood, Fabric, Vinyl, COM
 Swivel: S-360 (standard), Memory

SH	H	BRH	BRW	SD	SW	FRH	ARH
25	40.5	16.5	17.5	16	17	7	9
30	45.5	16.5	17.5	16	17	12	9
36	51.5	16.5	17.5	16	17	15	9

See Appendix for dimension abbreviation meanings.
 Measurements are in inches. Minor variations in size may occur.
 Custom heights also available.



Shown: Anodized Nickel, Canter Sand



Shown: Black Wrinkle, Canter Bordeaux



Shown: Bronze, Canter Storm

#411 Adeline

Options (also see Appendix):

Frame: Black Wrinkle, Pewter, Bronze, Anodized Nickel, 304 Stainless Steel
 Seat: Wood, Fabric, Vinyl, COM
 Swivel: S-360 (standard), Memory

SH	H	BRH	BRW	SD	SW	FRH
18	27	9.5	15	16	17	4
25	34	9.5	15	16	17	7
30	39	9.5	15	16	17	12
36	45	14.5	16.5	16	17	15

See Appendix for dimension abbreviation meanings.
 Measurements are in inches. Minor variations in size may occur.
 Custom heights also available.



Shown: Pewter, Graph Poppy



Shown: Anodized Nickel, Canter Espresso



Shown: Bronze, Canter Iron

#821

Reagan

Options (also see Appendix):

Frame: Black Wrinkle, Pewter, Bronze, Anodized Nickel
 Seat: Wood, Fabric, Vinyl, COM
 Swivel: S-360 (standard), Memory

SH	H	BRH	BRW	SD	SW	FRH
18	27	9.5	15	16	17	4
25	34	9.5	15	16	17	7
30	39	9.5	15	16	17	12
36	45	14	16	16	17	15

See Appendix for dimension abbreviation meanings.
 Measurements are in inches. Minor variations in size may occur.
 Custom heights also available.



Shown: Bronze, Graph Anchor



Shown: Anodized Nickel, Canter Pine



Shown: Black Wrinkle, Canter Earth

#610 Contessa I

Options (also see Appendix):

Frame: Black Wrinkle, Pewter, Bronze, Anodized Nickel
 Seat: Wood, Fabric, Vinyl, COM

Stationary

SH	H	BRH	BRW	SD	SW	FRH
18	32	14	16.5	16	17	-

See Appendix for dimension abbreviation meanings.
 Measurements are in inches. Minor variations in size may occur.



Shown: Stainless Steel, Graph Ruby



Shown: Black Wrinkle, Dark Cherry Maple



Shown: Anodized Nickel, Canter Twilight

#810

Contessa 2

Options (also see Appendix):

Frame: Black Wrinkle, Pewter, Bronze, Anodized Nickel, 304 Stainless Steel
 Seat: Wood, Fabric, Vinyl, COM
 Swivel: S-360 (standard), Memory

SH	H	BRH	BRW	SD	SW	FRH
25	38.5	14	16.5	16	17	7
30	43.5	14	16.5	16	17	12
36	49.5	14	16.5	16	17	15

See Appendix for dimension abbreviation meanings.
 Measurements are in inches. Minor variations in size may occur.
 Custom heights also available.



Shown: Bronze, Medium Oak



Shown: Pewter, Canter Red



Shown: Black Wrinkle, Graph Cork

#620

Catalina I

Options (also see Appendix):

Frame: Black Wrinkle, Pewter, Bronze, Anodized Nickel
 Seat: Wood, Fabric, Vinyl, COM

Stationary

SH	H	BRH	BRW	SD	SW	FRH
18	32	14	16.5	16	17	-

See Appendix for dimension abbreviation meanings. Measurements are in inches. Minor variations in size may occur.



Shown: Stainless Steel, Graph Chalice



Shown: Black Wrinkle, Graph Anchor



Shown: Bronze, Canter Pine

#820

Catalina 2

Options (also see Appendix):

Frame: Black Wrinkle, Pewter, Bronze, Anodized Nickel, 304 Stainless Steel
 Seat: Wood, Fabric, Vinyl, COM
 Swivel: S-360 (standard), Memory

SH	H	BRH	BRW	SD	SW	FRH
25	38.5	14	16	16	17	7
30	43.5	14	16	16	17	12
36	49.5	14	16	16	17	15

See Appendix for dimension abbreviation meanings.
 Measurements are in inches. Minor variations in size may occur.
 Custom heights also available.







Shown: Black Wrinkle, Natural Maple,
Canter Thatch



Shown: Pewter, Natural Maple,
Canter Bordeaux



Shown: Anodized Nickel, Natural Maple,
Graph Coal



Back Option A



Back Option B



Back Option C



Back Option D

#630

Voltaire I

Options (also see Appendix):

Frame: Black Wrinkle, Pewter, Bronze, Anodized Nickel
 Seat: Wood, Fabric, Vinyl, COM
 Back: Oak, Maple
 Finish: Natural, Medium, Dark, Dark Cherry, Custom, Painted (Black or Custom)

Stationary

SH	H	BRH	BRW	SD	SW	FRH
18	31.5	14	16	16	17	-

See Appendix for dimension abbreviation meanings.
 Measurements are in inches. Minor variations in size may occur.



Shown: Anodized Nickel, Medium Maple,
Canter Saddle



Shown: Pewter, Medium Maple,
Graph Chalice



Shown: Bronze, Medium Maple,
Graph Alpine



Back Option A



Back Option B



Back Option C



Back Option D

#830

Voltaire 2

Options (also see Appendix):

Frame: Black Wrinkle, Pewter, Bronze, Anodized Nickel
 Seat: Wood, Fabric, Vinyl, COM
 Back: Oak, Maple
 Finish: Natural, Medium, Dark, Dark Cherry, Custom, Painted (Black or Custom)
 Swivel: S-360 (standard), Memory

SH	H	BRH	BRW	SD	SW	FRH
25	39	14	16	16	17	7
30	45.5	14	16	16	17	12
36	50.5	14	16	16	17	15

See Appendix for dimension abbreviation meanings.
 Measurements are in inches. Minor variations in size may occur.
 Custom heights also available.



Shown: Anodized Nickel, Dark Cherry Beech,
Canter Storm



Shown: Black Wrinkle, Medium Beech,
Medium Maple



Shown: Bronze, Natural Beech,
Graph Tidal

#832

Thor

Options (also see Appendix):

- Frame: Black Wrinkle, Pewter, Bronze, Anodized Nickel
- Seat: Wood, Fabric, Vinyl, COM
- Back: Beech
- Finish: Natural, Medium, Dark, Dark Cherry, Custom, Painted (Black or Custom)
- Swivel: S-360 (standard), Memory

SH	H	BRH	BRW	SD	SW	FRH
25	39	14	16	16	17	7
30	45.5	14	16	16	17	12
36	50.5	14	16	16	17	15

See Appendix for dimension abbreviation meanings.
Measurements are in inches. Minor variations in size may occur.
Custom heights also available.



Shown: Black Wrinkle, Graph Parrot



Shown: Chrome, Graph Anchor



Shown: Stainless Steel, Medium Maple

#802

Misha

Options (also see Appendix):

Frame: Black Wrinkle, Pewter, Bronze, Anodized Nickel, Chrome, 304 Stainless Steel
 Seat: Wood, Fabric, Vinyl, COM
 Swivel: S-360 (standard)

SH	H	BRH	BRW	SD	SW	FRH
18	18	-	-	14.5	14.5	4.5
25	25	-	-	14.5	14.5	7
30	30	-	-	14.5	14.5	12
36	36	-	-	14.5	14.5	15

See Appendix for dimension abbreviation meanings.
 Measurements are in inches. Minor variations in size may occur.
 Custom heights also available.



Shown: Black Wrinkle, Black Vinyl



Shown: Top View, Pewter, Black Vinyl



Shown: Black Wrinkle, Black Vinyl

#840 Grizzly I

Options (also see Appendix):

Frame: Black Wrinkle, Pewter, Bronze, Anodized Nickel, Chrome
 Seat: Black Vinyl
 Swivel: S-360 (standard), Memory

SH	H	BRH	BRW	SD	SW	FRH
25	37	13	14	17	18	3
30	42	13	14	17	18	7
36	48	13	14	17	18	13

See Appendix for Dimension Abbreviations.
 All measurements are in inches. Minor variations in size may occur.
 Custom heights also available.



Shown: Black Wrinkle, Dark Cherry Beech



Shown: Clear, Black Vinyl



Shown: Black Wrinkle, Medium Beech

#910

Industrial

Options (also see Appendix):

Frame: Black Wrinkle, Clear
 Seat: Wood (Beech), Fabric, Vinyl, COM
 Height: Adjustable from 24" to 30"
 Swivel: Screw

SH	H	BRH	BRW	SD	SW	FRH
24-30	24-30	-	-	15	15	10

See Appendix for dimension abbreviation meanings.
 Measurements are in inches. Minor variations in size may occur.

Wood Seating Series

Iconic elegance blends style and strength in our Wood Series.

The Hampton Collection.

Constructed from solid European Beech, the Hampton Collection offers dependable durability and design. Seven style options complement any entertainment space whether residential or commercial.

The Domestic Hardwood Collection.

The Domestic Hardwood Collection provides classic design and sustainable strength. Manufactured from solid Appalachian Red Oak or Northeast Maple with an iconic Stoutmeister Commercial Base.

Customize your seating and choose from variety of standard or custom wood finishes or paint to showcase your unique style.





Shown: Medium



Shown: Dark Cherry



Shown: Painted, Black

#3110

Chelsea

Options (also see Appendix):

Finish: Natural, Medium, Dark, Dark Cherry, Custom, Painted (Black or Custom)

Seat: Wood

Optional Foot Rail: Chrome, Bronze, Brass, Copper, Black

SH	H	BRH	BRW	SD	SW	FRH
18	35	20	16	16	17	-
25	39	15	16	16	17	7
30	44	15	16	16	17	12

See Appendix for dimension abbreviation meanings.
 Measurements are in inches. Minor variations in size may occur.
 Custom heights also available.

Hampton Collection



Shown: Natural, Canter Storm



Shown: Dark Cherry, Dark Cherry



Shown: Painted Black, Graph Cork

#3120 Sloane

Options (also see Appendix):

Finish: Natural, Medium, Dark, Dark Cherry, Custom, Painted (Black or Custom)
 Seat: Wood, Fabric, Vinyl, COM
 Optional Foot Rail: Chrome, Bronze, Brass, Copper, Black

SH	H	BRH	BRW	SD	SW	FRH
18	35	15.5	15	16	17	-
25	39	14.5	16	16	17	7
30	44	15	16	16	17	12

See Appendix for dimension abbreviation meanings.
 Measurements are in inches. Minor variations in size may occur.
 Custom heights also available.



Shown: Painted Black, Canter Earth



Shown: Medium, Canter Thatch



Shown: Dark Cherry, Graph Chalice

#3130

Bristol

Options (also see Appendix):

Finish: Natural, Medium, Dark, Dark Cherry, Custom, Painted (Black or Custom)
 Seat: Fabric, Vinyl, COM
 Optional Foot Rail: Chrome, Bronze, Brass, Copper, Black

SH	H	BRH	BRW	SD	SW	FRH
18	34	16.5	16.5	16	17	-
25	38.5	14.5	15	16	17	7
30	44	15	15	16	17	12

See Appendix for dimension abbreviation meanings.
 Measurements are in inches. Minor variations in size may occur.
 Custom heights also available.

Hampton Collection



Shown: Painted Black, Painted-Black



Shown: Medium, Canter Earth



Shown: Natural, Canter Pine

#3140

Dakota

Options (also see Appendix):

Finish: Natural, Medium, Dark, Dark Cherry, Custom, Painted (Black or Custom)

Seat: Wood, Fabric, Vinyl, COM

Optional Foot Rail: Chrome, Bronze, Brass, Copper, Black

SH	H	BRH	BRW	SD	SW	FRH
18	34	15.5	15	16	17	-
25	38	14.5	16	16	17	7
30	43	15	16	16	17	12

See Appendix for dimension abbreviation meanings.
 Measurements are in inches. Minor variations in size may occur.
 Custom heights also available.

Hampton Collection



Shown: Natural, Graph Alpine



Shown: Dark Cherry, Graph Anchor



Shown: Painted Black, Canter Sand

#3160 Arbor

Options (also see Appendix):

Finish: Natural, Medium, Dark, Dark Cherry, Custom, Painted (Black or Custom)
 Seat: Fabric, Vinyl, COM
 Optional Foot Rail: Chrome, Bronze, Brass, Copper, Black

SH	H	BRH	BRW	SD	SW	FRH
18	35	16	17	16	18	-
25	38	14	17	16	18	7
30	44	14	17	16	18	12

See Appendix for dimension abbreviation meanings.
 Measurements are in inches. Minor variations in size may occur.
 Custom heights also available.

Hampton Collection



#3200 **Arie**

SH	H	BRH	BRW	SD	SW	FRH
25	39	15	18	17	19	7
30	44	15	18	17	19	12

#3210 **Lynn**

SH	H	BRH	BRW	SD	SW	FRH
25	25	-	-	12	18	10
30	30	-	-	12	18	13.5

Options (also see Appendix):

Finish: Espresso
 Seat: Black Vinyl

See Appendix for dimension abbreviation meanings.
 Measurements are in inches. Minor variations in size may occur.

Hampton Collection



Shown: Maple, Dark Cherry, Smooth Leg



Shown: Oak, Medium, Turned Leg



Shown: Maple, Natural, Smooth Leg

#GZ

Grizzly 2

Options (also see Appendix):

Wood: Oak or Maple
 Finish: Natural, Medium, Dark, Dark Cherry, Custom, Painted (Black or Custom)
 Seat: Black Vinyl
 Legs: Turned, Smooth
 Swivel: S-360 (standard), Memory

Domestic Hardwood Collection

SH	H	BRH	BRW	SD	SW	FRH
25	37	13	14	17	18	5
30	42	13	14	17	18	10

See Appendix for dimension abbreviation meanings.
 Measurements are in inches. Minor variations in size may occur.
 Custom heights also available.



Shown: Oak, Medium, Smooth Leg,
Graph Poppy



Shown: Maple, Dark Cherry, Smooth Leg,
Canter Saddle



Shown: Maple, Natural, Turned Leg,
Canter Folkstone Grey

#RC

Darcy

Options (also see Appendix):

Wood: Oak, Maple
 Finish: Natural, Medium, Dark, Dark Cherry, Custom, Painted (Black or Custom)
 Seat: Fabric, Vinyl, COM
 Legs: Turned, Smooth
 Swivel: S-360 (standard)

SH	H	BRH	BRW	SD	SW	FRH
18	18	-	-	14.5	14.5	-
25	25	-	-	14.5	14.5	4
30	30	-	-	14.5	14.5	10

See Appendix for dimension abbreviation meanings.
 Measurements are in inches. Minor variations in size may occur.
 Custom heights also available.

Domestic Hardwood Collection



Shown: Oak, Natural, Smooth Leg



Shown: Maple, Medium, Turned Leg



Shown: Oak, Dark Cherry, Smooth Leg

#SD **Sadie**

Options (also see Appendix):

- Wood: Oak, Maple
- Finish: Natural, Medium, Dark, Dark Cherry, Custom, Painted (Black or Custom)
- Seat: Wood
- Legs: Turned, Smooth
- Swivel: S-360 (standard)

Domestic Hardwood Collection

SH	H	BRH	BRW	SD	SW	FRH
18	18	-	-	14.5	14.5	-
25	25	-	-	14.5	14.5	4
30	30	-	-	14.5	14.5	10

See Appendix for dimension abbreviation meanings.
 Measurements are in inches. Minor variations in size may occur.
 Custom heights also available.

XL Seating Series - Big & Tall

In our XL Series, all stools feature up to a 2" wider footprint for added stability, and offer seats that are 2" wider and deeper for comfort. Independently tested to withstand 750 lbs. without failure, the XL Series provides strength and rigidity. Available in a variety of styles, customized to fit your unique space and personality - no matter how big or tall.

The following styles are available in our XL Series. Please see original listing of each stool for available options (not available in 304 Stainless Steel) and dimensions. Please note dimensions will vary slightly for the XL Seating Series.

#410 Jackie 2 (pg. 6)

#810 Contessa 2 (pg. 11)

#820 Catalina 2 (pg. 13)

#830 Voltaire 2 (pg. 17)

#802 Misha (pg. 19)

#RC Darcy (pg. 30)

#SD Sadie (pg. 31)





Shown: #XL820: Catalina 2 XL
Pewter, Graph Cork



Shown: #XL810: Contessa 2 XL
Anodized Nickel, Canter Earth



Shown: #XL410: Jackie 2 XL
Black Wrinkle, Natural Oak



Shown: #XL830: Voltaire 2 XL
Bronze, Natural Maple,
Canter Folkstone Grey



Shown: #XLRC: Darcy XL
Oak, Natural, Canter Sand, Turned Leg



Shown: #XLSD: Sadie XL
Oak, Dark Cherry, Smooth Leg



Shown: #XL802: Misha XL
Chrome, Graph Parrot

See original stool listing for dimensions.
Page numbers provided on opposite page.
Measurements are in inches. Minor variations in size may occur.

Stack Seating Series

Traditional style meets commercial quality in the Stacker Series to provide excellent long-term performance. Perfect for the hospitality and business industries, as well as personal events.

This traditional style stack chair features a large frame and higher seat back. Independently tested to support up to 750 lbs.

The frame is finished in a black, baked powder epoxy that resists abrasion to provide long-lasting durability. The seat and back are commercial grade black vinyl. The structure boasts a 3/4" square, 18-gauge, mechanical grade steel frame. The 18-gauge, 1/2" rear leg bar offers additional support and strength.

Fasteners are hidden on the 2-piece upholstered back pad for a sleek look. The 2" sewn seat is constructed of high-density foam for sustainable comfort. Foam meets or exceeds the Cal Spec 117 flame resistant requirement.

Nylon glides protect floors and the legs include stack bumpers to protect the frame finish when stacking.





#STK-XL Stacker XL

Options (also see Appendix):

Frame: Black
 Seat: Black Vinyl

SH	H	BRH	BRW	SD	SW	FRH
18	36	19	13	16	17	-

See Appendix for dimension abbreviation meanings.
 Measurements are in inches.



#STK Dolly Stacker Dolly

Table Series

Offering a variety of styles, our tables are sure to complement your entertainment space.

Bases.

With uncompromising quality, durability, and attention to detail, table bases are either a cast iron or steel base plate, steel column, and either a cast iron spider or square steel top plate. Finishes are strong to resist rust and abrasion for beautiful sustainability.

Select from a variety of height and top size configurations to suit your needs. Perfect for residential and commercial environments.

Each base includes adjustable levelers to accommodate many styles of flooring and uneven ground to ensure steadiness.

Tops.

Reversible table tops offer function, reliability, and flexibility for commercial and residential settings. Crafted from a hardened MDF inner core, scratch-resistant laminate top, and finished with durable trim, our reversible tops offer premium durability. With a solid black finish on one side and a dark cherry wood grain on the other, reversible tops provide flexibility for changing decor.

Licensed logo table tops are also available and offer the same hardened MDF inner core, scratch-resistant laminate top, and durable trim finish for long-lasting, resilient use.





Shown: Black Wrinkle



Shown: Black Wrinkle w/Optional Foot Ring



Shown: Black Wrinkle (#211-EB)

#211

“X” Base

Model #	Available Heights	Available Finishes	Base Size	Approx. Weight	Max. Top Size
211-22	29, 35, 41	Black Wrinkle	22 x 22	24 lbs.	30
211-30	29, 35, 41	Black Wrinkle	30 x 30	29 lbs.	42
211-EB	29, 35, 41	Black Wrinkle	22	22 lbs.	-

Details:

Cast iron base plate, 3-inch steel column, cast iron spider top plate
Available with optional foot ring (n/a for 29 height and EB models).

Measurements are in inches.



Shown: Chrome



Shown: Black Wrinkle w/Optional Foot Ring



Shown: Stainless Steel

#214

Round Base

Model #	Available Heights	Available Finishes	Base Size	Approx. Weight	Max. Top Size
214-16	29, 35, 41	Black Wrinkle, Chrome, Stainless Steel	16 Diameter	37 lbs.	30
214-22	29, 35, 41	Black Wrinkle, Chrome, Stainless Steel	22 Diameter	47 lbs.	42

Details:

Cast iron base plate, 3-inch steel column, cast iron spider top plate
 Optional foot ring only available with Black Wrinkle finish (n/a for 29 height).

Measurements are in inches.



Shown: Black Wrinkle



Shown: Chrome

#216 “Star” Base

Model #	Available Heights	Available Finishes	Base Size	Approx. Weight	Max. Top Size
216	41	Black Wrinkle, Chrome	26 Diameter	20 lbs.	36

Details:

Steel 5-point base plate, 2-inch steel column, steel square top plate
Includes foot ring.

Measurements are in inches.



Shown: Black Wrinkle



Shown: Chrome

#217 Square Base

Model #	Available Heights	Available Finishes	Base Size	Approx. Weight	Max. Top Size
217	29, 35, 41	Black Wrinkle, Chrome	17 x 17	24 lbs.	36

Details:

Cast iron base plate, 3-inch steel column, cast iron spider top plate

Measurements are in inches.

Reversible Tops

Top Size	Top Shape	Finish Side 1	Finish Side 2	Trim	Approx. Top Weight
30 x 48	Rectangle	Black	Dark Cherry Wood Grain	Black	32 lbs.
36 x 36	Square	Black	Dark Cherry Wood Grain	Black	30 lbs.
30 x 30	Square	Black	Dark Cherry Wood Grain	Black	20 lbs.
36	Round	Black	Dark Cherry Wood Grain	Black	28 lbs.
30	Round	Black	Dark Cherry Wood Grain	Black	18 lbs.
24	Round	Black	Dark Cherry Wood Grain	Black	14 lbs.



Shown: 36 Round, Dark Cherry Wood Grain



Shown: 30 Round, Black



Shown: 36 x 36 Square, Black



Shown: 30 x 48 Rectangle, Dark Cherry Wood Grain

Measurements are in inches.

Outdoor Series

Being around nature and fresh air is one of the best ways to boost mental health and reduce stress levels. Studies show that spending time in nature can reduce high blood pressure, muscle tension and heart rate. Outdoor living spaces offer the perfect opportunity to spend more time outdoors. The Outdoor Series offers a variety of styles and finishes for both seating and tables.

Seating.

Designed for residential or commercial spaces, choose from electroplated black or 304 stainless steel finishes. Outdoor rated cushions with commercial, marine grade vinyl are available for many styles.

Table Bases.

The 211, 214, and 216 table base styles are available in our Outdoor Series. Designed for residential or commercial spaces, choose from electroplated black or 304 stainless steel finishes.

Table Tops.

All-season table tops are perfect for both indoor and outdoor living spaces. Weatherproof, impact-resistant, and scratch-resistant, the commercial quality tops require minimal maintenance and offer easy clean up. Ideal for both commercial and residential settings.





#OD470 Willow

Options:

Frame: Electroplated Black
 Seat: Mesh

Stationary

SH	H	BRH	BRW	SD	SW	FRH	ARH
18	36	20	19	17.5	14	-	9.5
30	49	20	19	17.5	14.5	12	9.5

See Appendix for dimension abbreviation meanings.
 Measurements are in inches. Minor variations in size may occur.



#OD400 Outdoor Jackie I

Options:

Frame: Electroplated Black
 Seat: Mesh

Stationary

SH	H	BRH	BRW	SD	SW	FRH
18	38.5	14.5	16.5	16	17	-
25	43.5	14.5	16.5	16	17	12
30	49.5	14.5	16.5	16	17	15

See Appendix for dimension abbreviation meanings.
 Measurements are in inches. Minor variations in size may occur.



#OD405 Outdoor Zoey

Options:

Frame: Electroplated Black
 Seat: Mesh

Stationary

SH	H	BRH	BRW	SD	SW	FRH
25	25	-	-	14	14	6
30	30	-	-	14	14	12

See Appendix for dimension abbreviation meanings.
 Measurements are in inches. Minor variations in size may occur.



#OD410: SS Jackie 2
Shown: Breeze Sidewalk
(#410 Jackie 2 pg. 6)



#OD810: SS Contessa 2
Shown: Breeze Farro
(#810 Contessa 2 pg. 11)



#OD820: SS Catalina 2
Shown: Breeze Sapphire
(#820 Catalina 2 pg. 13)



#OD411 SS Adeline
Shown: Breeze Graphite
(#411 Adeline pg. 8)



#OD802: SS Misha
Shown: Breeze Champagne
(#802 Misha pg. 19)

304 Stainless Steel Seating

Options (also see Appendix):

Frame: 304 Stainless Steel
Seat: Outdoor-rated seat with Breeze vinyl
Swivel: S-360 (standard), Memory

See original stool listing for dimensions.
Page numbers provided above.
Measurements are in inches. Minor variations in size may occur.





Shown: OD211



Shown: OD211EB



Shown: OD214

Outdoor Table Bases

Model #	Available Heights	Available Finishes	Base Size	Approx. Weight	Max. Top Size
OD211	29, 35, 41	Electrocoated Black	30 Diameter	25 lbs.	42
OD211EB	29, 35, 41	Electrocoated Black	22 Diameter	25 lbs.	-
OD214	29, 35, 41	Electrocoated Black	22 Diameter	47 lbs.	42

Measurements are in inches.



Shown: OD214SS



Shown: OD219
(Umbrella Base)



Shown: OD216

Outdoor Table Bases

Model #	Available Heights	Available Finishes	Base Size	Approx. Weight	Max. Top Size
OD214SS	29, 35, 41	Stainless Steel	22 Diameter	47 lbs.	42
OD216	41	Electrocoated Black	26 Diameter	18 lbs.	36
OD219	29, 35, 41	Brushed Aluminum	18 Diameter	31 lbs.	36

OD216 includes foot ring.

Measurements are in inches.

Enduro Tops

All-Season Enduro table tops are perfect for both indoor and outdoor living spaces. The Enduro top is weatherproof, impact-resistant, and scratch-resistant. The commercial quality top requires minimal maintenance and offers easy clean up. Ideal for both commercial and residential settings.



Shown: OD211, White Marble



Shown: OD214, Rustic; OD400
Sesame Street Land at SeaWorld, Orlando, FL



Shown: OD214SS, Black Steel

Top Size	Top Shape	Available Finishes	Approx. Top Weight
30 x 48	Rectangle	Black Steel, Charcoal, Greystone, Natural, Rustic, White Ash, White Marble	42 lbs.
36 x 36	Square	Black Steel, Charcoal, Greystone, Natural, Rustic, White Ash, White Marble	35 lbs.
30 x 30	Square	Black Steel, Charcoal, Greystone, Natural, Rustic, White Ash, White Marble	27 lbs.
36	Round	Black Steel, Charcoal, Greystone, Natural, Rustic, White Ash, White Marble	28 lbs.
30	Round	Black Steel, Charcoal, Greystone, Natural, Rustic, White Ash, White Marble	24 lbs.

Measurements are in inches.

EuroSlim Tops

Offering the same features and benefits of the Enduro Top, but with a slim profile and matte finish.



Shown: OD214SS, Black Marble



Shown: OD211, Greystone; OD405 Private, Holland, MI



Shown: OD216, Rustic

Top Size	Top Shape	Available Finishes	Approx. Top Weight
32 x 48	Rectangle	Black Marble, Greystone, Rustic, White Marble	31 lbs.
36 x 36	Square	Black Marble, Greystone, Rustic, White Marble	27 lbs.
32 x 32	Square	Black Marble, Greystone, Rustic, White Marble	20 lbs.
36	Round	Black Marble, Greystone, Rustic, White Marble	20 lbs.
32	Round	Black Marble, Greystone, Rustic, White Marble	15 lbs.

Measurements are in inches.

Licensed Logo Game Room Series

Over the years, we have established partnerships and licensing for 125+ colleges and universities, The National Hockey League, all branches of the US Military, Indian Motorcycle, and Major League Baseball. We digitally print, sublimate, or laser engrave each order in-house using only top-of-the-line materials and equipment to provide unparalleled quality. Outfit your space with quality, officially licensed products for the ultimate fan experience. Select your motif from our list of official licensing partners (see Appendix).

Seating.

Designed for residential or commercial spaces, select from a variety of styles and durable finishes. Constructed in Holland, MI, the seats are high-density, US-made foam and commercial quality, marine grade vinyl. Dacron provides sustainable comfort and support, and a softer, rounder aesthetic. Officially licensed and approved logos are digitally printed using UV cured ink for a rich, long-lasting finish. Independently tested, our digitally printed vinyl seats showed no deterioration after rigorous, double-rub assessments.

Table Bases.

The 211, 214, 216, and 217 table base styles are available. Designed for residential or commercial spaces.

Table Tops.

Licensed logo table tops are 1-inch thick and constructed of a hardened MDF inner core, scratch-resistant laminate top, and durable, complementary trim finish for long-lasting, resilient use. Our advanced sublimation process produces brilliant clarity and color to bring your team to life.





Shown: #L7C1



Shown: #L7C1



Shown: #L7C4



Shown: #L7C4

Logo Retro Stools

Options (also see Appendix):

L7C1

SH	H	BRH	BRW	SD	SW	FRH
25	25	-	-	14.5	14.5	9
30	30	-	-	14.5	14.5	12

Frame: Chrome
 Seat: Vinyl
 Swivel: S-360

L7C4

SH	H	BRH	BRW	SD	SW	FRH
25	37	12	15	14.5	14.5	9
30	42	12	15	14.5	14.5	12

See Appendix for dimension abbreviation meanings.
 Measurements are in inches. Minor variations in size may occur.



Shown: #L7C3C



Shown: #L7C3C



Shown: #L7C3C



Shown: #L7C3C

Logo Ribbed Retro Stools

Options (also see Appendix):

Frame: Chrome
 Seat: Vinyl
 Swivel: S-360

SH	H	BRH	BRW	SD	SW	FRH
25	25	-	-	14.5	14.5	9
30	30	-	-	14.5	14.5	12

See Appendix for dimension abbreviation meanings.
 Measurements are in inches. Minor variations in size may occur.



Shown: #L8B1



Shown: #L8B1



Shown: #L8C1



Shown: #L8C1

Logo Traditional Stools

Options (also see Appendix):

Frame: Black Wrinkle, Chrome
 Seat: Vinyl
 Swivel: S-360

SH	H	BRH	BRW	SD	SW	FRH
25	25	-	-	14.5	14.5	7
30	30	-	-	14.5	14.5	12

See Appendix for dimension abbreviation meanings.
 Measurements are in inches. Minor variations in size may occur.



Shown: #L8B2B, Black Wrinkle



Shown: #L8B2C, Black Wrinkle, Chrome Band



Shown: #L8C2C, Chrome

Logo Contemporary Stools

Options (also see Appendix):

Frame: Black Wrinkle, Chrome
 Seat: Vinyl
 Swivel: S-360

SH	H	BRH	BRW	SD	SW	FRH
18	18	-	-	14.5	14.5	4.5
25	25	-	-	14.5	14.5	7
30	30	-	-	14.5	14.5	12

See Appendix for dimension abbreviation meanings.
 Measurements are in inches. Minor variations in size may occur.
 Custom heights also available.



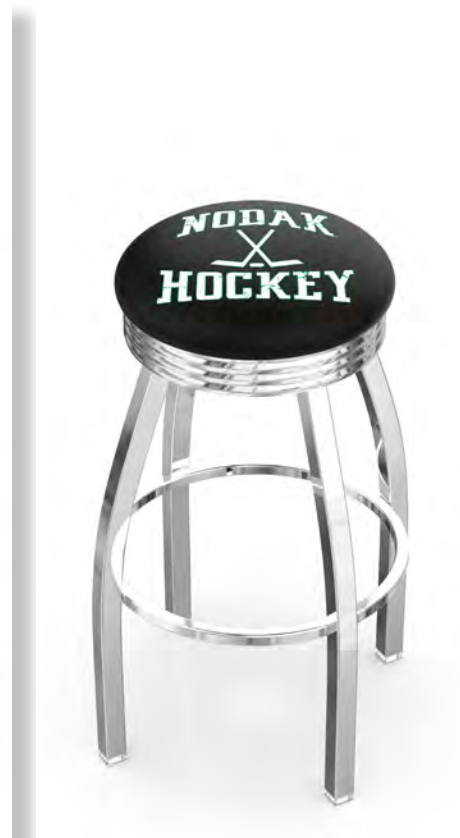
Shown: #L8B3C, Black Wrinkle,
Chrome Ribbed Band



Shown: #L8B3C, Black Wrinkle,
Chrome Ribbed Band



Shown: #L8C3C, Chrome,
Chrome Ribbed Band



Shown: #L8C3C, Chrome,
Chrome Ribbed Band

Logo Ribbed Contemporary Stools

Options (also see Appendix):

Frame: Black Wrinkle, Chrome
Seat: Vinyl
Swivel: S-360

SH	H	BRH	BRW	SD	SW	FRH
25	25	-	-	14.5	14.5	7
30	30	-	-	14.5	14.5	12

See Appendix for dimension abbreviation meanings.
Measurements are in inches. Minor variations in size may occur.
Custom heights also available.



Shown: Black Wrinkle



Shown: Black Wrinkle



Shown: Black Wrinkle

#L004 Logo Jackie I

Stationary Chair Options (also see Appendix):

Frame: Black Wrinkle, Pewter, Bronze, Anodized Nickel
 Seat: Vinyl

Stationary Stool Options (also see Appendix):

Frame: Black Wrinkle
 Seat: Vinyl

SH	H	BRH	BRW	SD	SW	FRH
18	38.5	14.5	16.5	16	17	-
25	43.5	14.5	16.5	16	17	12
30	49.5	14.5	16.5	16	17	15

See Appendix for dimension abbreviation meanings.
 Measurements are in inches. Minor variations in size may occur.
 Custom heights also available.



Shown: Black Wrinkle



Shown: Black Wrinkle



Shown: Black Wrinkle

#L014 Logo Jackie 2

Options (also see Appendix):

Frame: Black Wrinkle, Pewter, Bronze, Anodized Nickel
 Seat: Vinyl
 Swivel: S-360 (standard), Memory

SH	H	BRH	BRW	SD	SW	FRH
25	38.5	14.5	16.5	16	17	7
30	43.5	14.5	16.5	16	17	12
36	49.5	14.5	16.5	16	17	15

See Appendix for dimension abbreviation meanings.
 Measurements are in inches. Minor variations in size may occur.
 Custom heights also available.



Shown: Black Wrinkle



Shown: Black Wrinkle



Shown: Black Wrinkle

#L018 Logo Contessa 2

Options (also see Appendix):

Frame: Black Wrinkle, Pewter, Bronze, Anodized Nickel
 Seat: Vinyl
 Swivel: S-360 (standard), Memory

SH	H	BRH	BRW	SD	SW	FRH
25	38.5	14	16.5	16	17	7
30	43.5	14	16.5	16	17	12
36	49.5	14	16.5	16	17	15

See Appendix for dimension abbreviation meanings.
 Measurements are in inches. Minor variations in size may occur.
 Custom heights also available.



Shown: Black Wrinkle, Black Vinyl



Shown: Black Wrinkle, Black Vinyl



Shown: Black Wrinkle, Wood



Shown: Black Wrinkle, Wood

#L038 Logo Voltaire 2

Options (also see Appendix):

Frame: Black Wrinkle
 Seat: Vinyl
 Swivel: S-360 (standard), Memory

SH	H	BRH	BRW	SD	SW	FRH
25	39	14	16	16	17	7
30	45.5	14	16	16	17	12
36	50.5	14	16	16	17	15

See Appendix for dimension abbreviation meanings.
 Measurements are in inches. Minor variations in size may occur.
 Custom heights also available.



Shown: Black Wrinkle, Black Vinyl



Shown: Black Wrinkle, Black Vinyl



Shown: Black Wrinkle, Black Vinyl

#L048

Logo Grizzly I

Options (also see Appendix):

Frame: Black Wrinkle, Pewter, Bronze, Anodized Nickel, Chrome
 Seat: Black Vinyl
 Swivel: S-360 (standard), Memory

SH	H	BRH	BRW	SD	SW	FRH
25	37	13	14	17	18	3
30	42	13	14	17	18	7
36	48	13	14	17	18	13

See Appendix for dimension abbreviation meanings.
 Measurements are in inches. Minor variations in size may occur.
 Custom heights also available.



Shown: Oak, Dark Cherry, Smooth Leg



Shown: Maple, Medium, Smooth Leg

#LRC

Logo Darcy

Options (also see Appendix):

Wood: Oak or Maple
 Finish: Natural, Medium, Dark, Dark Cherry, Custom, Painted (Black or Custom)
 Seat: Vinyl
 Legs: Turned, Smooth
 Swivel: S-360

SH	H	BRH	BRW	SD	SW	FRH
18	18	-	-	14.5	14.5	-
25	25	-	-	14.5	14.5	4
30	30	-	-	14.5	14.5	10

See Appendix for dimension abbreviation meanings.
 Measurements are in inches. Minor variations in size may occur.
 Custom heights also available.



Shown: L211, Black Wrinkle



Shown: L214, Chrome



Shown: L216, Black Wrinkle



Shown: L217, Chrome

Logo Tables

Model #	Available Heights	Available Finishes	Foot Ring Available	Top Sizes
L211	30, 36, 42	Black Wrinkle	Yes	30, 36
L214	30, 36, 42	Black Wrinkle, Stainless Steel, Chrome	Yes, Black Wrinkle Only	30, 36
L216	42	Black Wrinkle E-Coated, Chrome	Standard	30, 36
L217	30, 36, 42	Black Wrinkle, Chrome	No	30, 36

Measurements are in inches.



LED Tables and Stools



Distinctive all-weather LED tables and stools are perfect for indoor/outdoor use, commercial, residential, and promotional applications, as well as events and trade shows.

Both tables and stools feature electrocoated steel bases for all-weather use, waterproof, rechargeable LED light units (up to 12 hours on single charge), and programmable IR remote with 16 different static color options and 4 transitional settings.

Each table and stool features 4 durable Lexan panels that can be customized. Select either an indoor logo top or an outdoor Enduro top.

Stools include a stainless steel foot ring. Seats are constructed of high-density foam with commercial, marine grade vinyl.

Details:

#L218 - LED Indoor/Outdoor Table: 42" Tall

#5000 - LED Indoor/Outdoor Stool: 30" Tall



Shown: #L5000



Shown: #L218, Enduro Black Steel



Shown: #L218, Logo



Billiard Tables

Options:
 Finishes: Chardonnay, Navajo
 Legs: Ball & Claw, Taper

Specifications:
 98" L x 54" W x 32" H
 726 lbs.





Cue Racks

Options:

Finishes: Chardonnay, Navajo, English Tudor, Black

Details:

Solid wood with high quality CNC-routed decorative elements

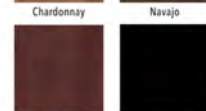
Real mirrored glass

Upper and lower piece design protects cue sticks

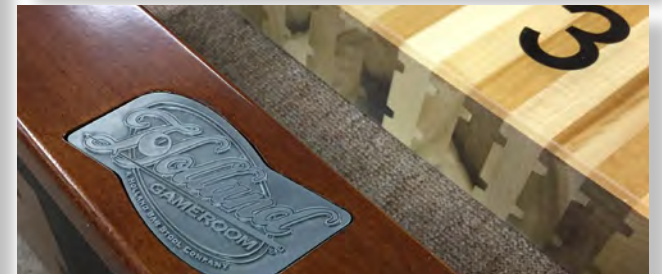
Keyhole hangers

Dimensions: 36" L x 15" W x 6" H

Stain Finishes Available



Chardonnay Navajo
English Tudor Black



Shuffleboard Tables

Options:

Finishes: Chardonnay, Navajo

Specifications:

Cabinet Dimensions: 146" L x 27" W x 33" H
 Playfield Dimensions: 132.5" L x 16" W x 2.5" and 0.25" polymer seal
 494 lbs.



Chardonnay

Navajo



Electronic Scoring Unit

Details:

Digitally printed

Pole and mounting plate fits most shuffleboard panels



Billiard Lighting

Options:
 Styles: Single Shade Pendant, 3-Shade
 Finishes: Black, Brass, Chrome w/Decorative Finials and Accent Trim
 Shade Colors: Light Blue, Dark Blue, Red, Maroon, Green, Yellow, White, Black, Purple, Orange

Details:
 Dimensions: 54" L x 14" W x 13" H (3-Shade Style)
 Shade Size: 14" diameter (ea.)





Billiard Triangles

Details:

Durable polypropylene
Digitally printed decals with UV protectant
Holds 15 balls

Billiard Cloth by Hainsworth

Hainsworth is the top professional choice for super smooth pool cloth. Made in England since 1783, Hainsworth is the most widely recognized, trusted, and used pool cloth.

The skilled Hainsworth manufacturing process includes quality, fade-resistant dyes, complete coating of fibers, and extensive finishing to remove loose fibers. Durability, stretch and quality of fiber are checked at every stage, and state-of-the-art modern manufacturing machinery guarantees quality and construction.

Hainsworth Elite Pro.

Worsted cloth, Hainsworth Elite Pro is woven with yarn that is combed to remove short fibers, resulting in a smoother cloth surface for speed and consistency of play. Hainsworth worsted cloth offers finer yarn for greater thread count per inch. Includes Spill Guard protection.

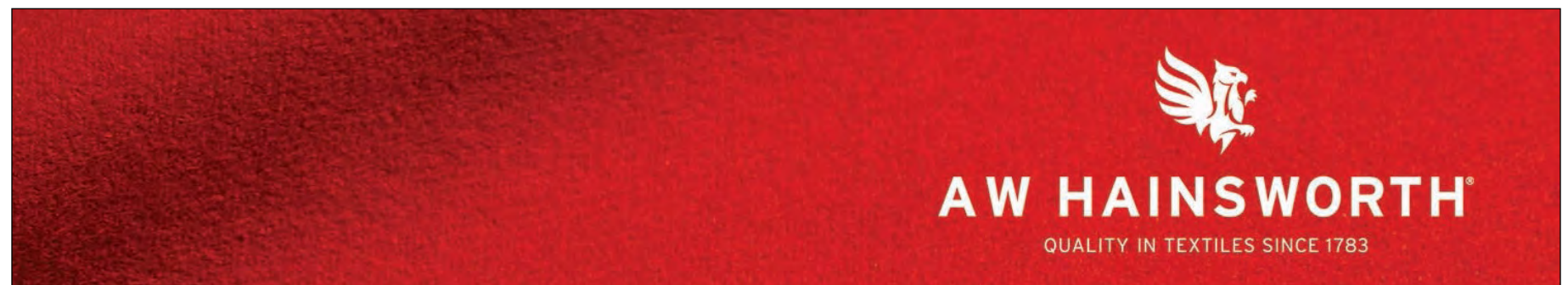
Hainsworth Elite Pro Logo Cloth.

The same high-quality worsted cloth weave, produces long-lasting, high-speed play and provides the perfect surface for print personalization and branding.

Hainsworth American Classic.

Manufactured from raw wool to a finished hand cut set, this very high-quality woolen cloth weave produces high-speed play, and ensures your cloth performs better and lasts longer. Includes Spill Guard protection.

Holland Bar Stool is proud to be the sole distributor for Hainsworth in North America.





Black



Bankers Gray



Burgundy



Camel



Cadet Blue



Charcoal



Euro Blue



Khaki



Marine Blue



Olive



Red



Slate



Spruce



Tournament Green



Wine

Hainsworth Elite Pro Cloth

Details:

High quality, worsted pool cloth
Long-lasting anti-pill finish
Cloth kits come complete with cloth for bed and rails
Available for 7', 8' and 9' pool tables
Non-imprint/non-logo only



Red



Royal Blue



Orange



Black



American Green



Purple



Bright Red



Wine



Red 200



Marine Blue



Spruce

Hainsworth Elite Pro Logo Cloth

Details:

High quality, worsted pool cloth

Long-lasting anti-pill finish

Cloth kits come complete with cloth for bed and rails

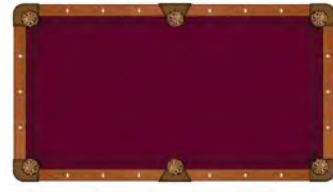
Available for 7', 8' and 9' pool tables



Bankers Gray



Black



Burgundy



Cadet Blue



Camel



Charcoal



Euro Blue



Khaki



Marine Blue



Red



Spruce



Tournament Green

Hainsworth American Classic Cloth

Details:

High quality wollen pool cloth
Long-lasting anti-pill finish
Cloth kits come complete with cloth for bed and rails
Available for 7', 8' and 9' pool tables
Non-imprint/non-logo only



Mirrors

Details:

1/8" thick authentic glass
Digitally printed graphics and UV cured ink for dynamic visual appeal
1.25" wide matte black finish frame
Includes saw-tooth hanging hardware

Available Sizes:

17" x 22" Horizontal or Vertical
15" x 26" Horizontal or Vertical



Canvas Prints

Details:

Durable, professionally treated canvas
Digitally printed graphics and UV cured ink for dynamic visual appeal
¾" x 1.5" solid wood stretcher bar frame
Triple v-nailed corners
Floater frame also available

Available Sizes:

15" x 20" Horizontal or Vertical
24" x 32" Horizontal or Vertical



Acrylic LED Backlit Signs

Details:

Frame features built-in LED lights to illuminate digitally printed graphics
Artwork is placed between two acrylic sheets and is changeable
Low energy use; includes 120V UL listed power supply
Easy to hang hardware (included)
A3 & A4 suitable for desktop display (hardware included)

Available Sizes/Dimensions:

A3: 14.25" W x 10.75" H
A4: 19.25" W x 14.50" H
Large: 32" W x 24" H



Snap Frame LED Backlit Signs

Details:

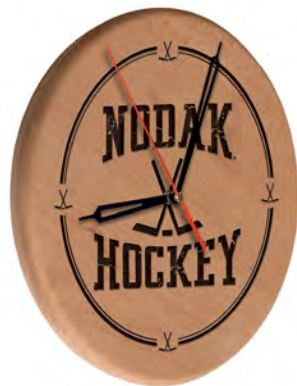
Frame features built-in LED lights to illuminate digitally printed graphics
Replaceable artwork protected by acrylic face
Snap open black aluminum frame
Low energy use; includes 120V UL listed power supply
Easy to hang hardware (included)

Size/Dimensions:

Media/image size: 12.75" x 20.50"
Frame size: 15.75" x 23.50"



Shown: Digitally Printed Clock



Shown: Laser Engraved Clock



Shown: Digitally Printed Sign



Shown: Laser Engraved Sign

Wood Clocks and Signs

Details:

1" thick solid wood

Digitally printed with UV cured ink or laser engraved

Multi-step finish process

Dimensions: 13" diameter

Clock: Accurate quartz movement powered by one AA battery (not included)



Shown: 19" Blue, Chrome



Shown: 19", Yellow, Chrome



Shown: 19", Yellow, Chrome



Shown: 15", Red, Chrome



Shown: 15", Red, Chrome

Double Ring Neon Clocks

Details:

Inner Neon Ring: White; Outer Neon Ring Colors: Yellow, Blue, Red, Green, Purple, Orange, White (based on logo)

Durable PVC face

Authentic glass lens face

Digitally printed with UV cured ink

Accurate quartz movement powered by one AA battery (not included)

UL listed 120v AC adaptor (to power the neon)

Available Sizes/Dimensions:

15 Inch:

15" diameter x 3.125" depth

19 Inch:

19" diameter x 5" depth



LED Indoor/Outdoor Clocks

Details:

UV resistant black ABS plastic casing with aluminum hands and glass lens face with rubber gasket to seal housing
Four LED lights with photo eye to sense ambient light and turn on/off automatically, powered by four D batteries (not included)
Accurate quartz movement powered by one AA battery (not included)
Vibrant, full color digital print with UV cured ink
Dimensions: 14" diameter x 3.125" depth



LED Indoor/Outdoor Thermometers

Details:

UV resistant black ABS plastic casing with aluminum hands and glass lens face with rubber gasket to seal housing
Four LED lights with photo eye to sense ambient light and turn on/off automatically, powered by four D batteries (not included)
Factory calibrated to accurately measure temperatures from -40 degrees Fahrenheit to 140 degrees Fahrenheit
Vibrant, full color digital print with UV cured ink
Dimensions: 14" diameter x 3.125" depth

Cover Series

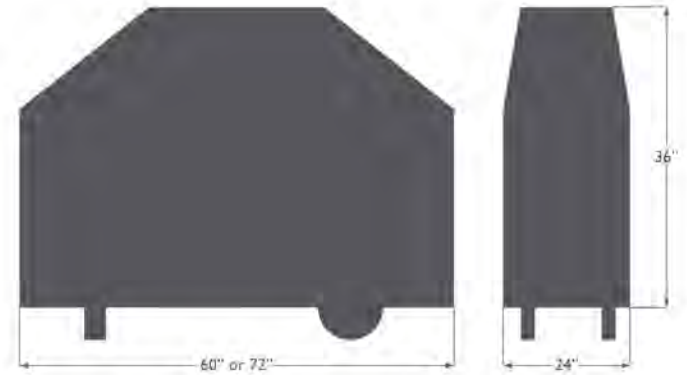
Protect your investment while showcasing your spirit.

Hand crafted in Holland, MI with quality materials, our durable covers provide superior protection with a long-lasting, rich appearance.

See Appendix for a complete list of our licensing partners.

Covers





Grill Covers

Details:

Hand crafted in Holland, MI using breathable commercial marine vinyl that is UV, water, stain, and tear resistant
Vented to release moisture and promote air circulation
Includes dual cinch clasps for a secure fit
Logo is digitally printed using the latest technologies and UV cured ink for a vibrant, long-lasting image

Available Sizes: 60\" and 72\"



Billiard Table Covers

Details:

Hand crafted in Holland, MI using commercial, woven-back (lint-free) marine grade vinyl
Features commercially sewn hem and slit corners so cover easily slips over game tables to protect from spills, dust, etc.
Logo is digitally printed using the latest technologies and UV cured ink for a vibrant, long-lasting image

Available Sizes/Dimensions:

7' = 88" L x 50" W x 12" Skirt
8' = 98" L x 54" W x 12" Skirt
9' = 110" L x 60" W x 12" Skirt



Shuffleboard Table Covers

Details:

Hand crafted in Holland, MI using commercial, woven-back (lint-free) marine vinyl
Features commercially sewn hem and slit corners so cover easily slips over game tables to protect from spills, dust, etc.
Logo is digitally printed using the latest technologies and UV cured ink for a vibrant, long-lasting image

Size: 12'

Dimensions: 148" L x 27" W x 10" Skirt



Tire Covers

Details:

Hand crafted in Holland, MI using commercial marine vinyl that is UV, water, stain, and tear resistant
Includes bead-welt seam for added strength and craftsmanship
Optional security grommets, cable, lock, and camera port
Logo is digitally printed using the latest technologies and UV cured ink for a vibrant, long-lasting image

Available Sizes: Exact-Fit (See Appendix for Sizing Chart). Custom sizes also available.



Tire Shades

Details:

Hand crafted in Holland, MI using commercial marine vinyl that is UV, water, stain, and tear resistant
Includes bead-welt seam for added strength and craftsmanship
Logo is digitally printed using the latest technologies and UV cured ink for a vibrant, long-lasting image

Available Sizes: Exact-Fit (See Appendix for Sizing Chart). Custom sizes also available.



TV Covers

Details:

Hand crafted in Holland, MI using breathable commercial marine vinyl that is UV, water, stain, and tear resistant
Soft backing protects screen
Spandex-like material wraps around the back of the TV to provide a secure fit that allows air circulation
Back opening ensures fit with most wall mounts and includes cinchable bungee
Logo is digitally printed using the latest technologies and UV cured ink for a vibrant, long-lasting image

Available Sizes:

TV30 = 35" W x 25" H
TV40 = 46" W x 28" H
TV50 = 55" W x 31" H
TV60 = 60" W x 37" H



Seat Covers

Details:

Hand crafted in Holland, MI using commercial marine vinyl for durability and sustainability

Accent bead-welt seam for added design and strength

Elastic band form-fits over existing stool seats

Logo is digitally printed using the latest technologies and UV cured ink for a vibrant, long-lasting image

Size: Fits 14.5" diameter x up to 4" thick cushion

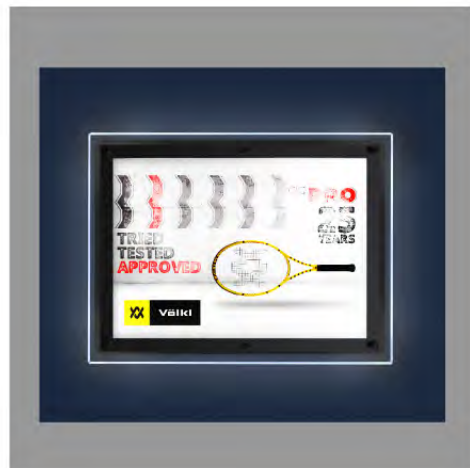
Custom Series

Our proficient customization process allows consumers to create their own designs. In-house advanced digital printing, laser engraving, and sublimation processes produce crisp, clear images to ensure perfect reproduction of artwork for vibrant custom designs.

We combine your logo or design with our products to achieve a custom style that is strong, beautiful, and timeless. Perfect for promotional branding, events, or trade shows, showcase your unique style with quality products from Holland Bar Stool.

- Stools
- Tables
- Billiard and Shuffleboard Tables
- Billiard and Shuffleboard Accessories
- Billiard Table Cloth
- Mirrors
- Canvas Prints
- LED Signs
- Wood Signs and Clocks
- Neon Clocks
- LED Indoor/Outdoor Clocks
- LED Indoor/Outdoor Thermometers
- Grill Covers
- Pool Table Covers
- Shuffleboard Table Covers
- Tire Covers
- Tire Shades
- TV Covers
- Seat Covers





Parts and Accessories

Our commitment to sustainability includes providing parts, pieces, and accessories so the strength and beauty of your investment endures.

Fabric by the Yard.

Upholstery options can be purchased by the yard so you can reignite your style. Simply let us know the upholstery name or number and the yardage amount needed.

Floor Protection.

Furniture can unintentionally damage your floor by causing scratches and abrasions. To protect your flooring, select from our variety of glides (shown on Page 97).

Foot Rails.

Foot rails provide protection and additional design elements to stationary seating. Available in chrome, bronze, brass, copper, and black finishes to accommodate a variety of design motifs. 11" long.

Seats.

Replacement seats extend the life of your seating. Available in the following options:

TRC - 14.5" round, 4" tall, available in any HBS upholstery or COM

RC - 14.5" round, 2.5" tall, available in any HBS upholstery or COM

SD - 14.5" round, 1.75" tall, saddle dish, available in solid oak or maple

810 - 17" wide, 16" deep, 2.5" tall, available in any HBS upholstery or COM

Swivels.

Our encased 52 stainless steel ball bearing swivels are powder coated to resist rust and ensure a smooth rotation for a quality seating experience.



UG



UG



SG



SG



MSG



MSG



LG



LG



SFG

Floor Protection

Details:

- UG: Universal Glide #6 (1.25" plastic sleeve)
- SG: Super Glide (accommodates wood stools)
- MSG: Plastic Glide (1.25" square tube legs)
- LG: Plastic Glide (1" round tube legs)
- SFG: Soft Felt Glide (adhesive)

APPENDICES

- I Measuring Seating, Tables, and Space
- II General Information
- III Seating Frame, Table Base, and Outdoor Table Top Finishes
- IV Officially Licensed Logos
- V Tire Cover and Tire Shade Size Chart
- VI Warranties
- VII Return Policy



I: Measuring Seating, Tables, and Space

It's important to measure your seating and tables to ensure comfort. We recommend 12" between your seat height and the top of your table, counter, or bar. Standard seat heights and terminology are:

- 18" = Chair
- 25" = Counter stool
- 30" = Bar stool

To assist with proper measurements for your seating, please refer to the diagram and information to the right.

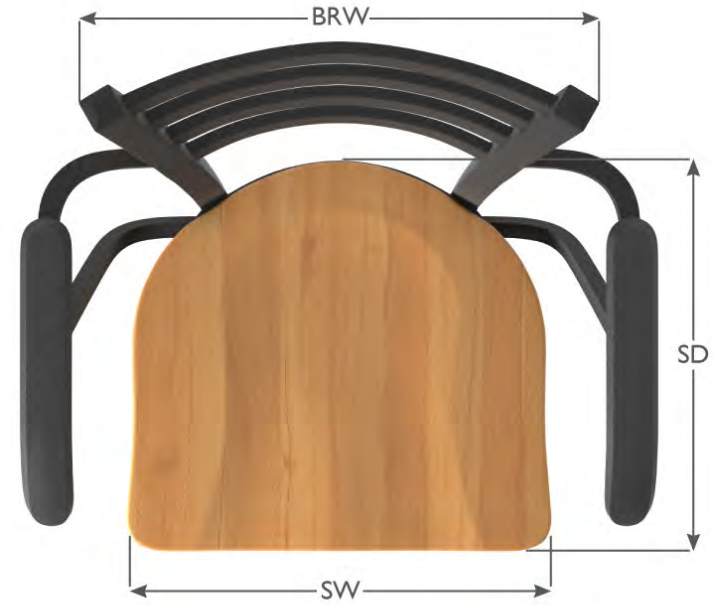
In addition, the below diagram illustrates the recommended seat height for common table, counter, and bar heights. If your table, counter, or bar is between the heights shown below, please contact us. We offer custom heights for many seating styles.



Measuring your space is also important. To calculate how many stools you will need for your space, measure your counter (in feet). Next, divide by two. This will give you the approximate number of stools to best fit your space. Two feet of counter space per stool is a comfortable arrangement for most Holland Bar Stool seating.

HOLLAND

— BAR STOOL —



Abbreviaton	Meaning
-------------	---------

SH	Seat Height
H	Height
BRH	Back Rest Height
BRW	Back Rest Width
SD	Seat Depth
SW	Seat Width
FRH	Foot Rest Height
ARH	Arm Rest Height

II: General Information

Lead Time and Shipping Method

To meet the needs of your busy schedule, we stock substantial inventory to ensure low lead times and ship most orders within 7-10 business days. We use FedEx Ground and Common Carrier, unless otherwise specified.

Wood Finishes and Custom Staining

Our 7-step, commercial furniture industry finishing system cleans and etches to enhance adhesion. We use only the finest catalyzed lacquers and paints for a strong, durable finish. Our finishing department can custom match almost any finish; simply send us a sample. Please allow approximately 2 weeks for delivery.

Fabric and Vinyl Cushions and Customer Owned Upholstery (COM)

We offer hundreds of upholstery options, but also offer a COM option. Please send the COM to us at the rate of 1/2 yard per seat (1 yard minimum, unless otherwise noted). For repeats and matches, 20% additional material is required. COM is priced as a Grade 1 material.

Fire Retardant - Foam and Upholstery

Holland Bar Stool Co. manufactures all seating products to nationally recognized standards for fire retardant upholstered materials and foam padding. We use 100% urethane foam with no fillers. This product passes the following flammability specifications:

- California Technology Bulletin
- FMVSS No. 302

Wood Species

Domestic hardwood is available in oak or maple. The Hampton Series and #910 Industrial are only available in beech. Seats for the Steel Series are either oak or maple.

Floor Protection and Glides

Super Glide floor protectors are optional on all wood stools. Universal glides for steel seating provide supreme protection for any floor surface.

Levelers

Adjustable levelers are standard on all tables.

Swivels

Our encased 52 stainless steel ball bearing swivels are powder coated to resist rust and ensure a smooth rotation for a quality seating experience. We offer two options.

S-360: Standard swivel with a 360 degree, continuous rotation.

Memory: Optional swivel with a 180 degree rotation and an internal spring that returns the seat to its original position. Available only for backed stools.

If you like the style of a certain swivel stool but do not want the seat to rotate, we can weld the swivel and lock the stool in a stationary position.

Recommended Cleaning Procedures

Wood Seats and Trim:

Using a clean, soft, damp (water only) cloth, wipe surface then spray with furniture polish and wipe clean with a separate clean, dry, soft cloth.

Chrome Finishes:

For best results, use a chrome polish and follow manufacturer's instructions.

Painted and Powder Coat Finishes:

Using a damp cloth with soapy water, clean and wipe dry.

Upholstered Seats:

Using a damp cloth with soapy water, clean and wipe dry. Use spot removers with caution (follow manufacturer instructions and test in an inconspicuous area).

Licensed Logo, Custom, Digitally Printed Vinyl Seats:

Spray with furniture polish and wipe dry with a clean, dry, soft cloth.

Table Top Surfaces:

Using a damp cloth with soapy water, clean and wipe dry.

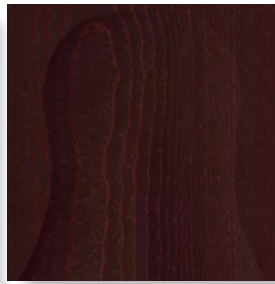
III: Seating Frame Finishes



Natural Oak



Medium Oak



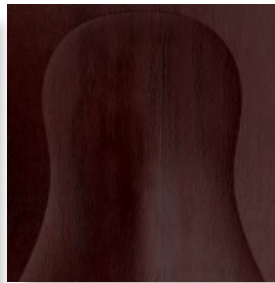
Dark Cherry Oak



Natural Maple



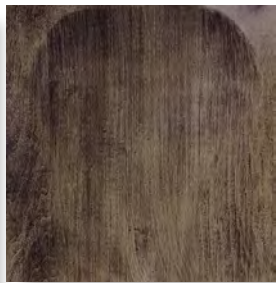
Medium Maple



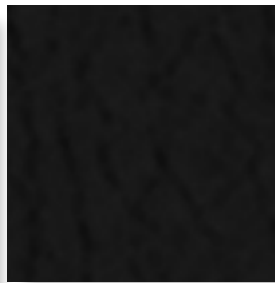
Dark Cherry Maple



Dark Oak



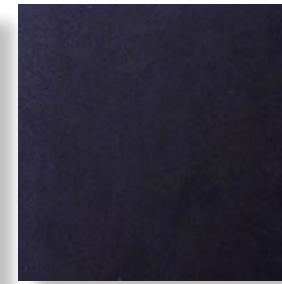
Dark Maple



Black



Anodized Nickel



Black Winkle



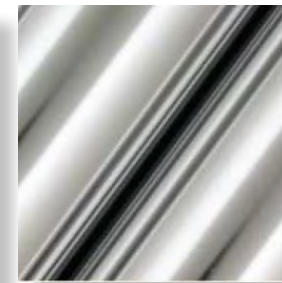
Bronze



Pewter



304 Stainless Steel

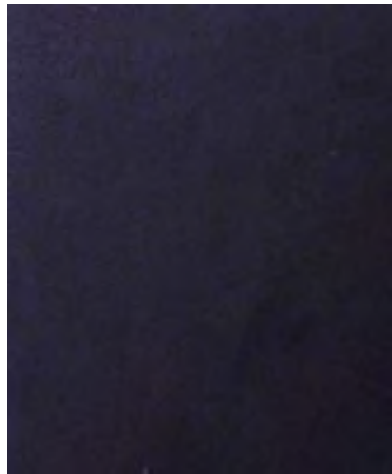


Chrome

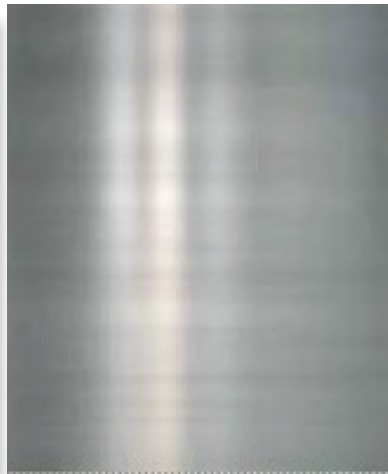
Wood

Metal

Table Base Finishes



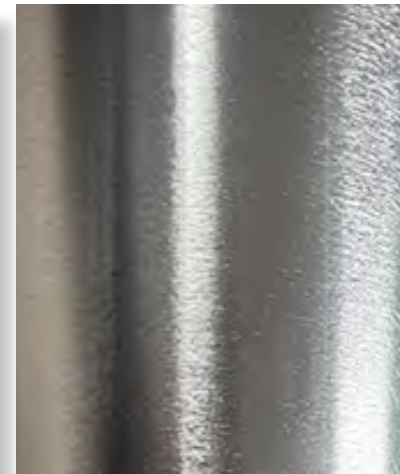
Black Wrinkle
Electrocoated Black



304 Stainless Steel



Chrome



Brushed Aluminum (OD219 only)

Metal

III: Outdoor Table Top Finishes



Rustic



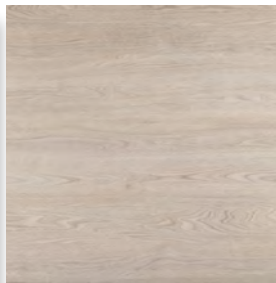
White Marble



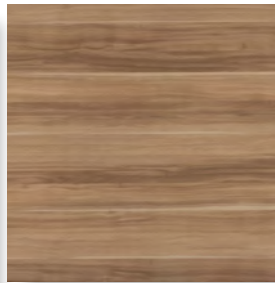
Greystone



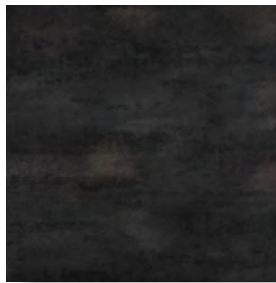
Charcoal



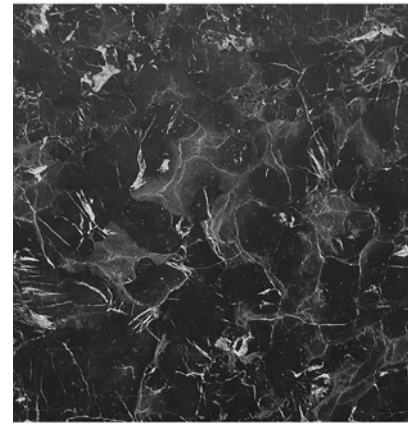
White Ash



Natural



Black Steel



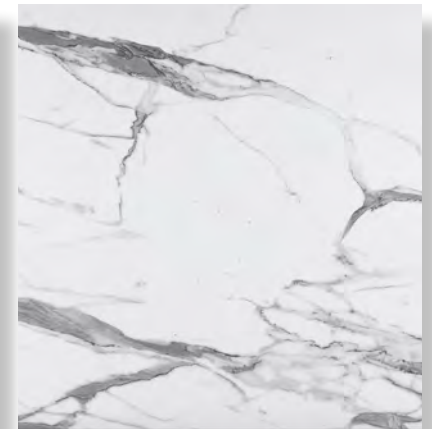
Black Marble



Greystone



Rustic



White Marble

Enduro

EuroSlim

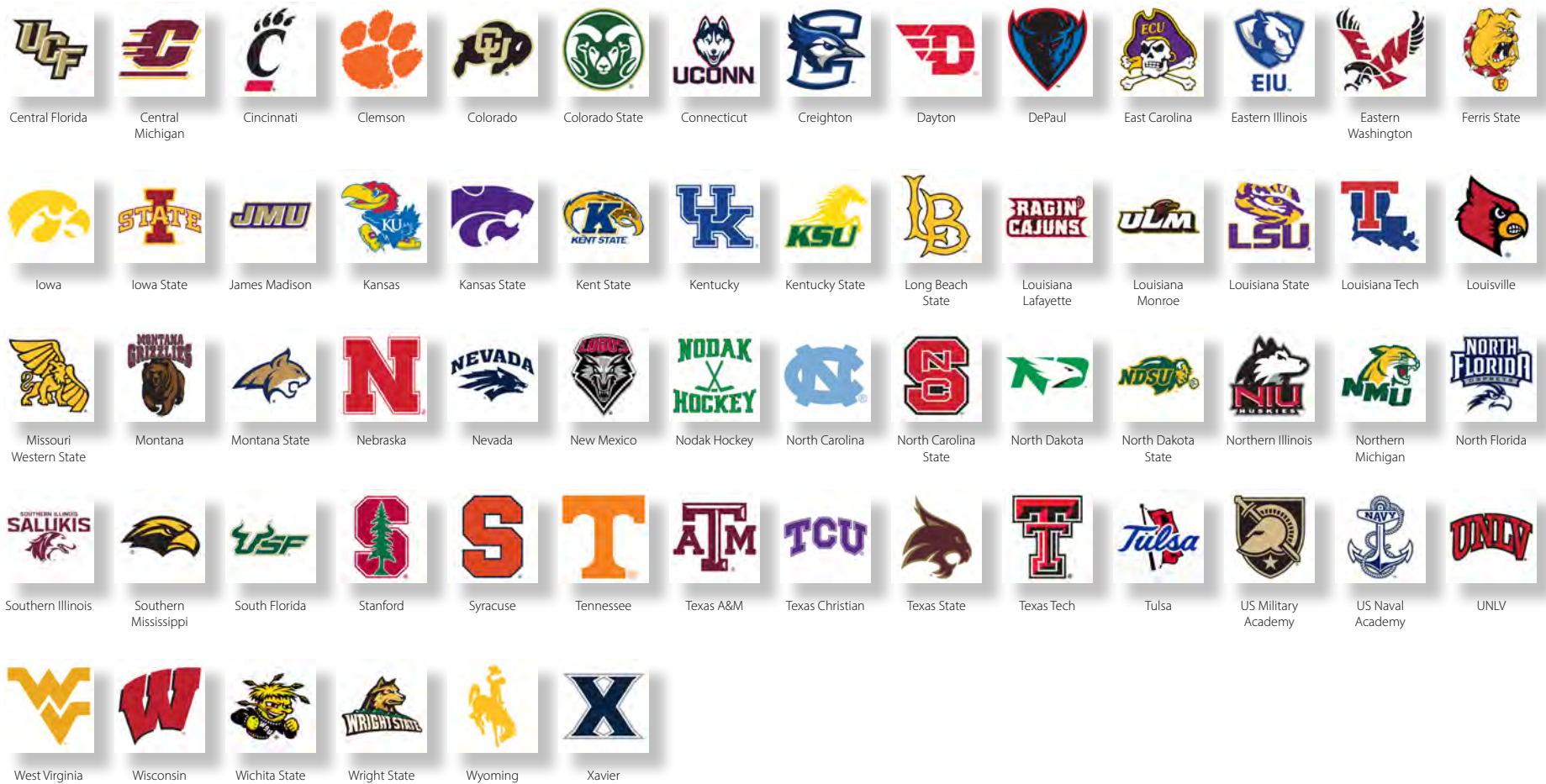


IV: Officially Licensed Logos



Collegiate

IV: Officially Licensed Logos



Collegiate

IV: Officially Licensed Logos



Arizona Diamondbacks



Atlanta Braves



Baltimore Orioles



Boston Red Sox



Chicago Cubs



Chicago White Sox



Cincinnati Reds



Cleveland Guardians



Colorado Rockies



Detroit Tigers



Houston Astros



Kansas City Royals



Los Angeles Angels



Los Angeles Dodgers



Miami Marlins



Milwaukee Brewers



Minnesota Twins



New York Mets



New York Yankees



Oakland Athletics



Philadelphia Phillies



Pittsburgh Pirates



San Diego Padres



San Francisco Giants



Seattle Mariners



St. Louis Cardinals



Tampa Bay Rays



Texas Rangers



Toronto Blue Jays



Washington Nationals

Major League Baseball

IV: Officially Licensed Logos



Anaheim
Ducks



Arizona
Coyotes



Boston
Bruins



Buffalo
Sabres



Calgary
Flames



Carolina
Hurricanes



Chicago
Blackhawks



Colorado
Avalanche



Columbus
Blue Jackets



Dallas
Stars



Detroit
Red Wings



Edmonton
Oilers



Florida
Panthers



Los Angeles
Kings



Minnesota
Wild



Montreal
Canadiens



Nashville
Predators



New Jersey
Devils



New York
Islanders



New York
Rangers



Ottawa
Senators



Philadelphia
Flyers



Pittsburgh
Penguins



San Jose
Sharks



Seattle
Kraken



St. Louis
Blues



Tampa Bay
Lightning



Toronto
Maple Leafs



Vancouver
Canucks



Vegas Golden
Knights



Washington
Capitals



Winnipeg
Jets

National Hockey League

IV: Officially Licensed Logos



Air Force



U.S. ARMY

Army



Coast Guard



Marines



Navy



POW - MIA



Purple Heart



Space Force

United States Military

IV: Officially Licensed Logos



Corona



Indian Motorcycle



Modelo



NHRA



VP Racing

Various

V: Tire Cover and Tire Shade Size Chart

Sizes 145-195

Tire Size	Cover Size	Tire Dimensions
145/80R16	Size M	25-1/2" x 8"
145-R12	Size O	21-1/2" x 8"
155/80R14	Size N	24" x 8"
165/80R13	Size N	24" x 8"
165/80R14	Size N	24" x 8"
175/80R13	Size N	24" x 8"
185/70R14	Size N	24" x 8"
185/75R14	Size J	27" x 8"
185/75R15	Size J	27" x 8"
185/80R13	Size N	24" x 8"
190/65R15	Size N	24" x 8"
195/60R15	Size N	24" x 8"
195/70R13	Size N	24" x 8"
195/75R14	Size M	25-1/2" x 8"
195/75R15	Size J	27" x 8"

Sizes 205-215

Tire Size	Cover Size	Tire Dimensions
205/55R15	Size N	24" x 8"
205/55R16	Size M	25-1/2" x 8"
205/60R14	Size N	24" x 8"
205/60R15	Size M	25-1/2" x 8"
205/60R15	Size N	24" x 8"
205/65R16	Size J	27" x 8"
205/70R15	Size J	27" x 8"
205/70R16	Size I	28" x 8"
205/75R14	Size J	27" x 8"
205/75R15	Size J	27" x 8"
215/50R15	Size N	24" x 8"
215/60R14	Size N	24" x 8"
215/65R15	Size J	27" x 8"
215/65R16	Size I	28" x 8"
215/70R15	Size I	28" x 8"
215/70R15	Size I	28" x 8"
215/70R16	Size I	28" x 8"
215/75R14	Size I	28" x 8"
215/75R15	Size Small	28-1/2" x 8"
215/75R16	Size F	29" x 8"
215/75R17	Size E10	30" x 10"
215/85R16	Size D10	30-3/4" x 10"

Sizes 225

Tire Size	Cover Size	Tire Dimensions
225/50R15	Size N	24" x 8"
225/50R16	Size N	24" x 8"
225/55R16	Size M	25-1/2" x 8"
225/55R17	Size J	27" x 8"
225/55R18	Size F	29" x 8"
225/60R14	Size N	24" x 8"
225/60R15	Size I	28" x 8"
225/60R16	Size I	28" x 8"
225/60R17	Size Small	28-1/2" x 8"
225/60R18	Size E	29-3/4" x 8"
225/65R16	Size Small	28-1/2" x 8"
225/65R17	Size F	29" x 8"
225/70R14	Size Small	28-1/2" x 8"
225/70R15	Size I	28" x 8"
225/70R16	Size E	29-3/4" x 8"
225/70R17	Size E10	30" x 10"
225/70R19.5	Size Large	31-3/4" x 11"
225/75R15	Size F	29" x 8"
225/75R16	Size E	29-3/4" x 8"
225/75R17	Size E10	30" x 10"
225/80R15	Size E10	30" x 10"

Sizes 235-245

Tire Size	Cover Size	Tire Dimensions
235/60R15	Size J	27" x 8"
235/60R16	Size J	27" x 8"
235/65R17	Size E10	30" x 10"
235/70R15	Size E	29-3/4" x 8"
235/70R16	Size E10	30" x 10"
235/70R17	Size E10	30" x 10"
235/75R15	Size F	29" x 8"
235/75R16	Size D10	30-3/4" x 10"
235/75R16	Size Large	31-3/4" x 11"
235/75R17	Size D10	30-3/4" x 10"
235/80R16	Size D10	30-3/4" x 10"
235/80R22.5	Size H1	37" x 12-1/2"
235/85R16	Size Large	31-3/4" x 11"
245/50R15	Size N	24" x 8"
245/65R17	Size D10	30-3/4" x 10"
245/70R15	Size C	31-1/4" x 12"
245/70R15	Size F	29" x 8"
245/70R16	Size D10	30-3/4" x 10"
245/70R19.5	Size A	34" x 8"
245/75R15	Size D10	30-3/4" x 10"
245/75R16	Size C	31-1/4" x 12"
245/75R16	Size D10	30-3/4" x 10"
245/75R17	Size Y	32-1/4" x 12"

Sizes 255

Tire Size	Cover Size	Tire Dimensions
255/30R22	Size E10	30" x 10"
255/35R22	Size E10	30" x 10"
255/55R17	Size I	28" x 8"
255/55R18	Size E10	30" x 10"
255/60R15	Size J	27" x 8"
255/60R19	Size Large	31-3/4" x 11"
255/65R16	Size D10	30-3/4" x 10"
255/65R16	Size E10	30" x 10"
255/65R17	Size E10	30" x 10"
255/65R18	Size Large	31-3/4" x 11"
255/70R15	Size E10	30" x 10"
255/70R16	Size D10	30-3/4" x 10"
255/70R17	Size Y	32-1/4" x 12"
255/70R18	Size Y	32-1/4" x 12"
255/70R22.5	Size H1	37" x 12-1/2"
255/75R14	Size E10	30" x 10"
255/75R16	Size D10	30-3/4" x 10"
255/75R16	Size E10	30" x 10"
255/75R17	Size Y	32-1/4" x 12"
255/75R18	Size Y	32-1/4" x 12"

Sizes 265

Tire Size	Cover Size	Tire Dimensions
265/35R22	Size Large	31-3/4" x 11"
265/40R22	Size Large	31-3/4" x 11"
265/45R20	Size E10	30" x 10"
265/50R19	Size Large	31-3/4" x 11"
265/50R20	Size Large	31-3/4" x 11"
265/60R16	Size Small	28-1/2" x 8"
265/60R18	Size D10	30-3/4" x 10"
265/65R17	Size Large	31-3/4" x 11"
265/65R18	Size Y	32-1/4" x 12"
265/70R14	Size Small	28-1/2" x 8"
265/70R15	Size E	29-3/4" x 8"
265/70R16	Size Large	31-3/4" x 11"
265/70R17	Size Large	31-3/4" x 11"
265/70R18	Size Z	33" x 12-1/2"
265/75R15	Size C	31-1/4" x 12"
265/75R16	Size Large	31-3/4" x 11"
265/75R18	Size Z	33" x 12-1/2"

Sizes 275-295

Tire Size	Cover Size	Tire Dimensions
275/45R22	Size Y	32-1/4" x 12"
275/55R20	Size Y	32-1/4" x 12"
275/60R20	Size Z	33" x 12-1/2"
275/65R18	Size Y	32-1/4" x 12"
275/65R20	Size H2	35" x 12-1/2"
275/70R16	Size C	31-1/4" x 12"
275/70R17	Size Y	32-1/4" x 12"
275/70R18	Size Z	33" x 12-1/2"
275/75R15	Size Large	31-3/4" x 11"
275/75R17	Size Z	33" x 12-1/2"
275/75R17	Size Large	31-3/4" x 11"
285/50R20	Size Y	32-1/4" x 12"
285/55R20	Size Y	32-1/4" x 12"
285/60R18	Size Y	32-1/4" x 12"
285/65R18	Size Y	32-1/4" x 12"
285/70R17	Size Z	33" x 12-1/2"
285/75R16	Size Z	33" x 12-1/2"
295/40R21	Size C	31-1/4" x 12"
295/45R18	Size Large	31-3/4" x 11"
295/45R20	Size Large	31-3/4" x 11"
295/60R22.5	Size H1	37" x 12-1/2"

Sizes 305-325

Tire Size	Cover Size	Tire Dimensions
305/35R24	Size Y	32-1/4" x 12"
305/40R22	Size Y	32-1/4" x 12"
305/50R20	Size Y	32-1/4" x 12"
305/60R18	Size Y	32-1/4" x 12"
305/70R16	Size Z	33" x 12-1/2"
315/70R17	Size H2	35" x 12-1/2"
325/60R16	Size Z	33" x 12-1/2"
325/60R20	Size H1	37" x 12-1/2"

Sizes Misc.

Tire Size	Cover Size	Tire Dimensions
30X12.5	Size C	31-1/4" x 12"
30X9.5R15	Size E10	30" x 10"
31X10.50R15	Size Large	31-3/4" x 11"
32X11.50R15	Size Y	32-1/4" x 12"
33X10.50R15	Size Z	33" x 12-1/2"
33X12.50R16	Size Z	33" x 12-1/2"
33X9.50R15	Size Y	32-1/4" x 12"
35X12.50R16	Size H2	35" x 12-1/2"
35X12.50R17	Size H2	35" x 12-1/2"
35X12.50R18	Size H2	35" x 12-1/2"
37X12.50	Size H1	37" x 12-1/2"
37X12.50R17	Size H1	37" x 12-1/2"
4.00 X 12	Size O	21-1/2" x 8"
4.50 X 12	Size O	21-1/2" x 8"
4.80 X 12	Size O	21-1/2" x 8"
5.30 X 12	Size O	21-1/2" x 8"
6.00 X 9	Size O	21-1/2" x 8"
6.90 X 12	Size O	21-1/2" x 8"
7.50 X R16	Size Large	31-3/4" x 11"
78 X 15	Size I	28" x 8"
78 X 14	Size J	27" x 8"
8.75R16.5	Size Small	28-1/2" x 8"
B7B-13	Size M	25-1/2" x 8"

Sizes Misc.

Tire Size	Cover Size	Tire Dimensions
11X15	Size Y	32-1/4" x 12"
12X16.5	Size Y	32-1/4" x 12"

Choosing Your Tire Cover Size



D = Diameter
W = Width of tire tread

Custom sizes also available.



VI: Warranty - Commercial Use Limited Warranty

Holland Bar Stool Company warrants: Original Purchaser ("Purchaser"), that as the manufacturer of all its products ("Products") to be free from defects in material and workmanship on all of our series of stools, table bases and chairs (excluding the *Hampton Series, **Enduro/Euro Table Tops) for a period of 3 years, under normal use and service, following the date of purchase and delivery to the "Purchaser". This warranty does not cover printed vinyl (***)Logo Series), upholstery, printed table tops (***)Logo Series), wood or metal finishes.

*Hampton Series - Holland Bar Stool Company warrants: Original Purchaser ("Purchaser"), that as the manufacturer of all its products ("Products") to be free from defects in material and workmanship for a period of 1 year, under normal use and service, following the date of purchase and delivery to the "Purchaser". This warranty does not cover upholstery, wood or metal finishes.

**Enduro/Euro Table Tops - Holland Bar Stool Company warrants: Original Purchaser ("Purchaser"), that all Enduro and Euro outdoor table tops to be free from defects in material and workmanship for a period of 2 years, under normal use and service, following the date of purchase and delivery to the "Purchaser". This warranty does not cover the table top finish.

***Logo Series - Holland Bar Stool Company warrants: Original Purchaser ("Purchaser"), that as the manufacturer of all of its' printed Logo Series stool seat tops and printed Logo Series table tops to be free from defects in material and workmanship for a period of 1 year, under normal use and service, following the date of purchase and delivery to the "Purchaser".

The warranty, regardless of product, does not cover damages which result from neglect, accident, intentional misuse or acts of nature, normal wear and tear, exposure to extreme temperature or humidity, immersion in water, fading or color variations of vinyl or artwork over time, scratches, minor variations in size, unauthorized repair, alteration, abuse or misuse of Product.

The obligation of Holland Bar Stool Company under this warranty is limited, at the option of Holland Bar Stool Company to repair or replacement of Product with one of equal or similar type and quality, if, to the satisfaction of Holland Bar Stool Company the Products as manufactured proves defective under normal use and service.

Repairs or replacements under this warranty will be made by Holland Bar Stool Company or anyone Holland Bar Stool Company, in its sole direction authorizes, at no charge to the Original Purchaser. If return to the factory is necessary, packing and shipping costs to the factory will be charged to the Purchaser. Return shipping shall be freight prepaid to the dealer making the recommendation. All costs for delivery from the Purchaser to the dealer and for any delivery to the purchaser from the dealer shall be paid by the Purchaser.

THE WARRANTY REMEDY TO REPAIR OR REPLACE A PRODUCT IS IN LIEU OF ALL RIGHTS TO THE PURCHASER OR USER OF THE PRODUCT DUE TO PRODUCT FAILURE OR NONPERFORMANCE. THIS WARRANTY IS IN LIEU OF ALL OTHER WARRANTIES AND REPRESENTATIONS, WHETHER WRITTEN, EXPRESS OR IMPLIED, INCLUDING WITHOUT LIMITING THE GENERALITY OF THE FOREGOING, EACH AND EVERY WARRANTY OF MERCHANTABILITY AND FITNESS FOR A PARTICULAR PURPOSE. MANUFACTURER SHALL NOT BE LIABLE FOR ANY SPECIAL, INCIDENTAL, OR CONSEQUENTIAL DAMAGES ARISING OUT OF THE SUPPLY OF OR USE OF ANY PRODUCTS, EVEN IF IT HAS BEEN ADVISED OF THE POSSIBILITY OF SUCH DAMAGES. MANUFACTURER'S LIABILITY FOR ANY CAUSE WHATSOEVER IS LIMITED TO THE TOTAL PRICE PAID TO MANUFACTURER. NO ACTION SHALL BE BROUGHT MORE THAN SIX MONTHS AFTER THE CAUSE OF ACTION HAS ARISEN. IN NO EVENT SHALL THE TIME PERIOD OF ANY WARRANTIES THAT MANUFACTURER IS SUBJECT TO EXCEED THE TIME PERIODS SPECIFIED ABOVE.

THIS WARRANTY GIVES YOU SPECIFIC LEGAL RIGHTS AND THERE MAY BE OTHER RIGHTS WHICH VARY FROM STATE TO STATE.



Coors LIGHT

IN MEMORY OF
SP4 DANIEL N. BLEEDORN
★
U.S. ARMY

IN MEMORY OF
SP5 GARY 'OZZIE' MOONEN
★
U.S. ARMY

IN MEMORY OF
SP5 GARY 'OZZIE' MOONEN
★
U.S. ARMY

NOTICE
All Beverages Are Aligned
Responsibly Served
Only to Those Who Are
21 or Older

21
All Beverages Are Aligned
Responsibly Served
Only to Those Who Are
21 or Older

VI: Warranty - Residential Use Limited Warranty

Holland Bar Stool Company warrants: Original Purchaser ("Purchaser"), that as the manufacturer of all its products ("Products") to be free from defects in material and workmanship on all of our series of stools, table bases and chairs (excluding the *Hampton Series, **Enduro/Euro Table Tops) for a period of 5 years, under normal use and service for personal, family and household purposes, following the date of purchase and delivery to the "Purchaser". This warranty does not cover printed vinyl (***)Logo Series), upholstery, printed table tops (***)Logo Series), wood or metal finishes.

*Hampton Series - Holland Bar Stool Company warrants: Original Purchaser ("Purchaser"), that as the manufacturer of all its products ("Products") to be free from defects in material and workmanship for a period of 2 years, under normal use and service, following the date of purchase and delivery to the "Purchaser". This warranty does not cover upholstery, wood or metal finishes.

**Enduro/Euro Table Tops - Holland Bar Stool Company warrants: Original Purchaser ("Purchaser"), that all Enduro and Euro outdoor table tops to be free from defects in material and workmanship for a period of 2 years, under normal use and service, following the date of purchase and delivery to the "Purchaser". This warranty does not cover the table top finish.

***Logo Series - Holland Bar Stool Company warrants: Original Purchaser ("Purchaser"), that as the manufacturer of all of its' printed Logo Series stool seat tops and printed Logo Series table tops to be free from defects in material and workmanship for a period of 1 year, under normal use and service, following the date of purchase and delivery to the "Purchaser".

This warranty, regardless of product, does not cover damages which result from neglect, accident, intentional misuse or acts of nature, normal wear and tear, exposure to extreme temperature or humidity, immersion in water, fading or color variations of vinyl or artwork over time, scratches, minor variations in size, unauthorized repair, alteration, abuse or misuse of Product.

The obligation of Holland Bar Stool Company under this warranty is limited, at the option of Holland Bar Stool Company to repair or replacement of Product with one of equal or similar type and quality, if, to the satisfaction of Holland Bar Stool Company the Products as manufactured proves defective under normal use and service.

Repairs or replacements under this warranty will be made by Holland Bar Stool Company or anyone Holland Bar Stool Company, in its sole direction authorizes, at no charge to the Original Purchaser. If return to the factory is necessary, packing and shipping costs to the factory will be charged to the Purchaser. Return shipping shall be freight prepaid to the dealer making the recommendation. All costs for delivery from the Purchaser to the dealer and for any delivery to the purchaser from the dealer shall be paid by the Purchaser.

THE WARRANTY REMEDY TO REPAIR OR REPLACE A PRODUCT IS IN LIEU OF ALL RIGHTS TO THE PURCHASER OR USER OF THE PRODUCT DUE TO PRODUCT FAILURE OR NONPERFORMANCE. THIS WARRANTY IS IN LIEU OF ALL OTHER WARRANTIES AND REPRESENTATIONS, WHETHER WRITTEN, EXPRESS OR IMPLIED, INCLUDING WITHOUT LIMITING THE GENERALITY OF THE FOREGOING, EACH AND EVERY WARRANTY OF MERCHANTABILITY AND FITNESS FOR A PARTICULAR PURPOSE. MANUFACTURER SHALL NOT BE LIABLE FOR ANY SPECIAL, INCIDENTAL, OR CONSEQUENTIAL DAMAGES ARISING OUT OF THE SUPPLY OF OR USE OF ANY PRODUCTS, EVEN IF IT HAS BEEN ADVISED OF THE POSSIBILITY OF SUCH DAMAGES. MANUFACTURER'S LIABILITY FOR ANY CAUSE WHATSOEVER IS LIMITED TO THE TOTAL PRICE PAID TO MANUFACTURER. NO ACTION SHALL BE BROUGHT MORE THAN SIX MONTHS AFTER THE CAUSE OF ACTION HAS ARISEN. IN NO EVENT SHALL THE TIME PERIOD OF ANY MANUFACTURER WARRANTIES, WHETHER EXPRESS OR IMPLIED, EXCEED THE TIME PERIODS SPECIFIED ABOVE.

THIS WARRANTY GIVES YOU SPECIFIC LEGAL RIGHTS AND THERE MAY BE OTHER RIGHTS WHICH VARY FROM STATE TO STATE.

VII: Return Policy

Holland Bar Stool stands behind every product with uncompromising quality, durability, and attention to detail. Our highly knowledgeable and tenured team share a passion for excellent products and finding new ways to create value to best support our customers.

If you are not satisfied with your purchase, Holland Bar Stool will replace products with manufacturing defects or due to Holland Bar Stool error within the scope and guidelines of our warranties.

All freight damage or incorrect shipment claims must be made within 48 hours of receipt of product. It is the Purchasers responsibility to inspect product upon receipt. Any claims not made within 48 hours are subject to refusal at the discretion of Holland Bar Stool Co.

To issue a return:

Call Customer Service and inform us immediately about the problem.

Holland Bar Stool will (as deemed necessary) send out replacement part(s) and/or replace defective part(s). Original/defective parts must be placed in the new part's box.

Purchaser/Dealer is responsible for shipping and all costs associated with returning parts to Holland Bar Stool.

Product/parts must arrive in original condition or Purchaser/Dealer will be billed the price of the product/parts.

For non-warranty issues, a 20% restocking fee will be charged for the return of any/all products. Additional freight for new parts and/or the difference in price between parts being exchanged will be billed to the Purchaser/Dealer.



HOLLAND

— BAR STOOL —

12839 Corporate Circle Place
Holland MI 49424
616-399-5530
www.HollandBarStool.com

© 2024 Holland Bar Stool Company. All Rights Reserved.